

SA Jagters- en Wildbewaringsvereniging  
SA Hunters and Game Conservation Association

Plot 3, Mountain Drive 7 / Plot 3, 7 Mountain Drive, Derdepoort  
Postbus / PO Box 1952, Montana Park, 0159  
Tel: (012) 808-9300 Faks / Fax: (012) 808-9344  
E-pos / Email: [admin@sahunt.co.za](mailto:admin@sahunt.co.za) Web: [www.sahunters.co.za](http://www.sahunters.co.za)



*Suid-Afrika se Grootste Bewaringsorganisasie - gefokus op Bewaring deur Volhoubare Benutting*  
*South Africa's Largest Conservation Organisation - focussed on Conservation Through Sustainable Use*

## **RULES FOR MEASURING TROPHIES FOR INCLUSION IN THE SAHGCA HUNTING TROPHY REGISTER 2018**

### **1. FOUNDATION**

#### **1.1. Hunting trophy**

A hunting trophy is any horn, ivory, tooth, hoof, claw, skin, hair, feather, egg or any identifiable part of a harvested wild animal that the hunter wishes to preserve as a memento of the hunt.

#### **1.2. Hunters code**

All concepts and actions assumed and described in this document are subject to the principles of SAHGCA's *Hunters Code* and in SAHGCA's *Position statement on The Hunt*.

#### **1.3. SAHGCA Trophy Register**

The SAHGCA Trophy Register which is updated annually, records the measurements of horn sets, teeth, ivory or skulls presented and measured at branches country wide. The intention of the Trophy Register is not a competition to honour the hunter or person who picked-up the trophy, but to acknowledge the individual hunter for submitting the trophy for record purposes in SAHGCA's Trophy Register.

The SAHGCA Trophy Register honours the animal where the trophy comes from, irrespective of whether it has been picked up, died of natural causes, been killed by a predator, or been shot by a hunter.

The trophy measurement system that is used today, originated in 1880 when taxidermist Rowland Ward of London developed a measurement method to record the trophies that he had processed. In 1892, Ward published his first record book, *Horn Measurements and Weights of the Great Game of the World*. Right from the onset, he made it clear that the purpose of the record book was to pay tribute to the animal and was not for competition purposes. He set the minimum standard for trophies high to encourage hunters to hunt adult animals that have already transferred their genes to the herd. Rowland Ward published his second book, *Records of Big Game*, which is still used today.

When the South African Hunters Association (currently SAHGCA) was established in 1949, it also started using Rowland Ward's methods to measure trophies.

In 1977, American C. J. McElroy established Safari Club International (SCI). He decided that Roland Ward's method of ranking on the longest measured horn was inadequate. He wanted a system measuring the total horn growth. His method comprises adding the measurements of both horns and their bases to determine a total score. One eighth of an inch is equal to one point. McElroy also decided that game with spiral horns such as Kudu, Eland, Nyala, Bushbuck and others be measured along the spiral instead of along the outside or front of the horn.

In 1982, Game Conservation International purchased Rowland Ward Publications and decided to measure spiral horns in the same way as SCI.

At that time, this change in the measuring method had put SAHGCA in a very difficult position because the Association, as a member of CHASA (Confederation of Hunting Associations of South Africa), assisted in maintaining the trophy register using the old Rowland Ward method. Extensive discussions

followed to determine which one of the two systems should be used. A committee was subsequently appointed to develop a CHASA trophy measurement system according to three requirements: (1) It had to be truly South African; (2) it had to be clearly defined to avoid any possible confusion in interpretation; and (3) that it should not be altered once accepted (with the exception of minor amendments that would not impact on the general rules). The last requirement was extremely important to avoid old records from losing their relevance.

The committee decided with a few cosmetic changes to the rules to stick to the old Rowland Ward methods. Only the methods for measuring the Black wildebeest and Crocodile were changed. This decision was immediately unpopular because the horns of Kudu, Eland, Bushbuck etc., were then measured according to the old method while the rest of the world measured these horns along the spiral. CHASA stuck to the third requirement and refused to switch over to the new Rowland Ward method. It was the older folks in particular that objected.

With time, the various associations in CHASA increasingly supported changing the system. In 1994, SAHGCA succeeded in convincing CHASA to switch over to the new Roland Ward method. In 2004, SAHGCA terminated its affiliation to CHASA.

In 2006, SAHGCA decentralised trophy measurement to branch level. Previously, all trophy measuring took place in Pretoria on the eve of the AGM. With the vast massive growth in the number of branches, decentralising trophy measurement was a logical step.

When SAHGCA started recording trophy data, their minimums, in most instances did not correspond with those of Roland Ward.

In 2008, SAHGCA decided to make all the minimums the same as those for Rowland Ward. However, a trophy that qualifies for SAHGCA's trophy book does not necessarily qualify for Roland Ward because of the minor differences in the measuring methods and rules between the two measurement methods.

Trophies recorded in SA Hunters Trophy Register, must be measured by an official SA Hunters trophy measurer. The same applies for Rowland Ward. SA Hunters' official trophy measurers do not measure for Roland Ward, and vice versa.

## 2. IMPLEMENTATION

Up until 2005, trophies were entered for measurement, registration and recognition, at the Association's Annual General Meeting.

The phenomenal growth in SAHGCA's membership and the subsequent establishment of 74 branches nationwide resulted in it no longer being feasible or practical to bring trophies from all over the country to Pretoria for the annual registration event.

The training of a large number of trophy measurers enabled the decentralisation of the trophy measuring process down to branch level using the established SAHGCA measuring system.

From 2006 to 2017 all trophies were measured at branch level and qualifying trophy entries were sent to the SAHGCA national office, where the details were incorporated into the SAHGCA Trophy Register

In 2018 this process changed, to adapt to the association's administration system and henceforth all trophies measured, even those that do not qualify for the register, can be entered directly by the branch into the member administration system, to reflect on the member's profile. Only trophies that attain the minimum standards for inclusion, will automatically be taken up in the SAHGCA Trophy Register.

The Association is indebted to its trained trophy measurers who maintain the high standards that SAHGCA has established over many years

## 3. GENERAL RULES

### 3.1. TROPHY REGISTER

- 3.1.1. Annually, trophies submitted for evaluation by members at branch level that meet or exceed the minimum requirement for the particular species in the Trophy Register, will be registered and considered for recognition during the annual congress. (this process is called trophy registration).
- 3.1.2. Only new trophies are considered for recognition during the annual Congress. To qualify as a new trophy, the period in which it was hunted, must meet the following criteria:
  - 3.1.2.1. It must be a trophy of a species hunted during 1 September of the previous year to 31 August of the current year;
  - 3.1.2.2. If a member cannot submit a trophy in time for registration (see 3.1.2.1) because of delays in receiving such trophy from the taxidermist or due to importation, he/she may enter it the following year to be considered for recognition at the annual congress.
- 3.1.3. Trophies submitted by junior members would only be accepted if the hunter was at least ten (10) years old or turned ten years old during the calendar year during which the trophy was hunted.
- 3.1.4. Old trophies: All other trophies that meet the minimum requirement but were hunted prior to the qualifying period for new trophies, will be accepted entered into for the SA Hunters Trophy Register, but will not qualify for acknowledgement recognition at the annual Congress.
- 3.1.5. SAHGCA's Trophy Register data base reflects only the measurements and or weights of indigenous and phenotypical Africa species that have been bred and hunted on extensive systems. Trophies from colour variants or individual animals of species bred on intensive or semi-intensive systems (including predators) and sedated animals will not be considered for registration. The most recent edition of Rowland Ward will be used to determine indigenous species.

- 3.1.6. Africa species imported from countries that fall outside their natural distribution, qualify for registration in the Trophy Register, but will not qualify for recognition as described in 3.2 below.
- 3.1.7. The adjudication and measurement of trophies is done according to the current rules and measurement methods as determined and amended by SA Hunters from time to time.
- 3.1.8. Trophies that had been picked up qualify for registration in the Trophy Register, but will not qualify for recognition at the annual congress.
- 3.1.9. Trophies of species exotic to Africa that were hunted in areas where they occur naturally and have not been bred on intensive or semi-intensive systems may only be entered at branch level if that branch keeps record of such entries in its branch trophy register.
- 3.1.10. Trophies are measured and/or weighed according to the metric system to the nearest 1mm or nearest ½ kg. The information is entered electronically on Form T02.b for submission to the national office where measurements will be converted to inches and pounds. (See point 9 for a conversion table for mm to inches).
- 3.1.11. Only the biggest or only tusk on elephant, pig and hippopotami will be measured or weighed for registration or acknowledgement at the congress.
- 3.1.12. The total weight or length of tusks from warthog, bush pig, hippopotamus and elephant cannot be determined if the trophy has already been mounted. These tusks (ivory) must be removed from the skull and measured in the loose condition. In the case of elephant tusks, there must be nothing added that affects the weight thereof.
- 3.1.13. The soft tissue at the base of the horns of reedbuck and mountain reedbuck is not measured as part of the horn.
- 3.1.14. Broken horns that are shorter than 80% of the unbroken horn, will not be considered for recognition at the congress, but will be registered if they meet the required minimum measurement.
- 3.1.15. Freaks of nature or deformed horns will not be considered for registration, only horns that follow the natural and typical form of the species will be considered for registration. When one horn of a set is normal and the other is deformed, it will be regarded as a freak of nature. The judges at branch level will determine which trophies are acceptable for registration, with final oversight from the Hunting Committee. Rhinoceros horns are excluded from this ruling.
- 3.1.16. Mounted crocodile skulls may not be submitted.
- 3.1.17. The total length and width of a crocodile skull with its lower jaw in place will be measured (with the skin of the nose if it is still part of the skull).
- 3.1.18. If the trophy needs to be weighed, the member must liaise with the branch trophy official who must ensure that a properly calibrated scale (with the necessary certificates) is available to weigh the trophy.
- 3.1.19. If a trophy qualifies to be entered in the Trophy Register as the biggest or heaviest trophy (or if the hunter qualifies to receive the Inyathi Award), its measurements must be verified by an official measurer of a neighbouring branch or by the Head Trophy Official. The hunter must cover the cost thereof. A photograph of the specific trophy in the field, with the hunter clearly recognisable, must be included with form T01.b and the necessary documentation as proof of the legal hunting of that animal when submitting the entry to Inyathi Park.
- 3.1.20. The SAHGCA minimums correspond directly with the Rowland Ward minimums, except where the method of measurement differs, for example the Black Wildebeest and Crocodile. For new species, species for which no entries achieve the minimum standard or species for which there are less than five entries that meet the required minimum standard, the qualifying standard will be set at 80% of the minimum. This will prevail until such time as there are five individual entries of that species that meet or exceed the minimum and those entries that now fall under the minimum will be removed. These entries that fall under the

minimum will qualify for registration in the Trophy Register but will not be considered for any form of recognition.

### 3.2. **RECOGNITION OF TROPHIES**

Trophies that meet the requirement (in terms of length and weight) will be considered for the following annual recognitions:

#### 3.2.1. **Hunting trophy of the year**

An engraved medal and certificate will be awarded annually to a hunting trophy taken by a senior and a junior, that measures the highest percentage of the largest (or heaviest) trophy previously recorded by the Association for a particular species in each of the four hunting weapon categories, namely: hunting rifle, hunting bow, hunting handgun and muzzle loader. At the annual dinner, four awards will be made in the Hunting Trophy of the Year for seniors and four awards for juniors (provided that entries for all four categories in each class have been received).

In instances of equal highest percentage, a certificate and a medal for each of the qualifying trophies will be awarded.

#### 3.2.2. **Champion Hunting trophy of the year**

A floating trophy will ceremonially be handed to both the senior and junior member, that hunted a trophy that attained the highest percentage against the current largest trophy in the Register, a miniature trophy will be awarded to take home. During the annual congress recognition will be given to one trophy hunted by a senior member and one hunted by a junior member

In instances of equal highest percentage, the floating trophy will be shared and a miniature trophy will be awarded for each of the qualifying trophies.

#### 3.2.3. **Species Trophy of the Year**

An engraved medal and certificate will be awarded annually to the trophy entry submitted per species by an individual for evaluation that achieved the highest percentage compared to the association's largest (or heaviest) record for that species, irrespective of the hunting weapon used. The relevant branch will hand over the trophy to the member at a suitable occasion.

#### 3.2.4. **New Largest Trophy**

An engraved medal and certificate will be awarded to the entry that exceeds the previous biggest measurement (or weight) of that particular species, entered in the SAHGCA Trophy Register. In the case of equal measurements for the same species, a certificate and medal will be awarded for each of the qualifying trophies at the annual dinner.

#### 3.2.5. **Inter Branch Species Trophy**

An engraved shield (floating trophy) and certificate will be awarded annually to the branch that enters four trophies of different species, with the highest combined percentage compared to the largest measurements (length or weight) for those particular species in the SAHGCA Trophy Register. This will be presented at the annual dinner.

#### 3.2.6. **Inyathi Award**

If a member enters a new trophy that qualifies for the trophy register and is 95% or bigger than the current largest entry in the Trophy Register, the hunter will qualify for the Inyathi Hunting Award. If a member enters more than one trophy that qualifies for this award, he/she will receive the award for the trophy that attained the highest percentage. The Inyathi Award is made in terms of the policy that applies to similar prestige awards in other disciplines in the Association, such as the Platinum President Shooting Award.

### 3.3. **OFFICIAL STRUCTURE FOR MEASURING AND RECOGNITION OF TROPHIES**

- 3.3.1. The official structure for entering trophies in the SAHGCA Trophy Register starts at branch level and proceeds to SAHGCA's Head Trophy Official; to the Manager Hunting Affairs; to the Vice President Hunting Affairs; to the SAHGCA Executive Committee; to the Congress.
- 3.3.2. At branch level the management committee annually appoints an SAHGCA trained Trophy Measuring Official. Where a branch does not have an officially trained trophy measuring official, it may negotiate with a neighbouring branch for their trophy measurer's assistance.
- 3.3.3. The branch trophy measuring official is annually responsible for performing all trophy measuring functions and related administrative duties at branch level.
- 3.3.4. The branch trophy measuring official is responsible for maintaining the branch trophy register.
- 3.3.5. At national level, the Head Trophy Official is responsible for the proper and correct entering of all trophy information submitted annually by branches into the SAHGCA Trophy Register. He/she must also prepare the necessary certificates and recognitions of trophies awarded at the annual congress.
- 3.3.6. The Vice President: Hunting Affairs and the Manager: Hunting Affairs must present the submissions for trophy recognition at the annual congress as received from the Head Trophy Official, to the Board for approval.

### 3.4. **ENTRIES (participation and evaluation)**

- 3.4.1. Only fully paid-up members on presentation of their membership card may participate in SAHGCA's annual process of trophy measuring and registration.
  - 3.4.1.1. A junior member is any paid-up member of the Association that turns 18 (or is younger than 18) during the calendar year when the hunt

took place, with the understanding that the member was at least 10 years old or turned 10 in the calendar year that the trophy was hunted.

- 3.4.2. A member may only enter a trophy for evaluation that he/she has personally picked up or hunted.
- 3.4.3. A trophy submitted for evaluation does not require a drying out period and can be measured or weighed at any time after being hunted or picked up.
- 3.4.4. A trophy may be entered either in a raw, unprocessed condition or processed or already mounted, provided that the conditions stipulated in 3.4.11 are considered.
- 3.4.5. Trophies submitted for evaluation must be free from insects and any unpleasant odours.
- 3.4.6. B Branch trophy measuring officers may disqualify any trophy for evaluation if it appears to be old or where there is any doubt that the trophy was hunted during that calendar year as described in 3.1.2.1 to 3.1.2.2 above, without providing any reasons. (the trophy will be registered as an old trophy if it qualifies). Members are advised not to hang their trophies outside, exposed to adverse weather conditions if they wish to enter such trophies for recognition.
- 3.4.7. All NEW trophies submitted for evaluation must be accompanied by documentation with information showing where and the date that the trophy was legally hunted. This is not applicable to OLD or pick-up trophies, for registration purposes only, but it does not absolve the owner of being in legal possession of such trophy..
- 3.4.8. Trophies hunted in South Africa must be accompanied by:
  - 3.4.8.1. A hunting licence from the province where the hunt took place, and/or;
  - 3.4.8.2. In the case of exempted farms, a letter from the owner or his/her representative with the exemption number of the hunting farm, duly signed by the owner, or his/her representative and the hunter, and /or;

3.4.8.3. A CITES permit and/or a TOPS permit if the hunted species is listed on the CITES and/or NEMBA schedules for scarce, or threatened, or protected species or as required by national nature conservation legislation.

**NB:** A photocopy of the above documentation must be attached to the entry form (T01.d) and filed and kept by the branch management for a period of 5 (five) years.

3.4.9. Trophies hunted outside South Africa, must be accompanied by:

3.4.9.1. A hunting licence issued in the name of the hunter from the country where the hunt took place;

3.4.9.2. Documentation to prove that the trophy was imported legally;

3.4.9.3. A CITES permit if the hunted species is listed on a CITES schedule for scarce or threatened species or as required by national nature conservation legislation.

3.4.10. Members of the branch trophy measuring committee may not evaluate their own trophy entries.

3.4.11. The Association, Board and judges cannot be held liable for any loss of or damage to trophies submitted for the annual registration process. Members entering mounted trophies for registration are solely responsible for ensuring that their trophies are not damaged or lost. It is also their responsibility to provide a stand or other means to display the mounted trophy if he or she chooses to do so. The judges will always handle all trophies with the utmost care during the measurement and evaluation process.

3.4.12. Should a dispute arise about the identification of a trophy of a specific species, the Association retains the right to postpone recognition thereof until a scientific analysis of such a trophy can be made or until an expert can assess it for a final decision.

3.4.13. Trophies entered without the required documentation as proof of a legal hunt as well as the hunter's declaration that the animal was hunted responsibly and in adherence to the Association's hunters' code

and trophy rules, attached to Form T01.d, will not be accepted. This rule only applies to new trophies.

3.4.14. Trophy entries are then entered directly into the member administration system by either the branch administrator or the nominated person. The branch chairman must nominate who the person will be, who will be doing this, **even if it is to be the current branch administrator**. The nomination must be made directly to Johan van Oostenrijk at johanvo@sahunt.co.za

3.4.15. If there is reason to believe that a hunter and/or a trophy measuring official knowingly has tried to circumvent the rules or ethos described in this document, the case must be reported to the Association's disciplinary committee without delay. If a hunter is found guilty, over and above any penalties imposed by the disciplinary committee, an investigation must be launched into the authenticity of all trophies entered by that individual.

3.4.16. If a trophy measuring official is found guilty, over and above any penalties imposed by the disciplinary committee an investigation must be launched into any trophies measured by him/her that qualified for recognition.

### 3.5. **INTERPRETATION OF THE RULES**

With the interpretation of any differences in these rules, the Afrikaans version will be held as master.

### 4. **ADMINISTRATION**

4.1. The T01.d transfer of the data from the T.01d to the electronic system must please complete and meticulously done, to ensure that the correct data is incorporated into the register.

4.2. No T.02c entry forms will be accepted and it is thus also not necessary to complete this summary any more, all this data will in future be stored directly on the member administration system.

4.3. Members wishing to submit trophies for evaluation must complete Form T01.d preferably with the assistance of an experienced person such as a qualified trophy measurer. The form is available on the SAHGCA website under Hunting Affairs.

#### 4.4 Completion of Form T01.d

##### 4.4.1 Branch Register Number

This requirement has been deleted as it is now redundant .

**4.4.2 Example:** Mr. S. Africa, Member no: 012345, Status: Senior member; Branch: Transvaal Branch (Branch code: 010) (refer to branch codes under item 5 in this document).

- i. Species hunted:
  - a. Gemsbok at Upington in South Africa on 7 June 2015
  - b. Bushpig at Bela-Bela in South Africa on 21 May 2015
- ii. The above mentioned information is confirmed using the hunting licences, permits or permission letters that the member MUST provide. In certain provinces landowners must also have a permit to hunt on their own property.
- iii. Mr Africa hunted the trophy with a hunting rifle. Enter "Rifle" under point C on form T01.d.
- iv. Mr Africa is a senior member. Enter "Senior" under point B on form T01.d.
- v. Mr Africa is a member of Transvaal Branch. Enter branch code 010 under point A on form T01.d.
- vi. Mr Africa's trophy is a new trophy. Enter "New" under point D on form T01.d. If it is an old trophy, then "Old" should be entered.
- vii. The detail of the Gemsbok that Mr Africa entered must be completed in the first line according to the headings in the columns. The details of the Bushpig must be entered in the second line (the species code for Gemsbok is 3051 and for the Bushpig it is 1050).

- viii. Any comments that need to be made about the trophy should be entered into the Comments section immediately below that trophy eg. "Left horn is less than 80% of the length of the right horn" if this is the case.

##### 4.4.3 The species code

- i. The species code as well as the minimum largest measurement (weight) of each species included in the SAHGCA Trophy Register is found under point 6 of this document, but we encourage that all trophies measured, should be entered into the system, as even though it may not go into the register, it will still reflect on the member's personal profile.

##### 4.4.4 Name of Species

Ensure that the correct species name is used to enable measurers to know what they are measuring and apply the correct method (see item 6 in this document).

##### 4.4.5 Date of hunt

Check that the date of the hunt corresponds with the date on the licence, permit or permission letter. The date has to be exact, i.e. day, month and year. In the case of an old trophy or a pickup, where the exact date is not known, please use 1 January of the relevant year.

##### 4.4.6 Nearest Town

Use the name of the town nearest to the farm where the hunt took place (the new or old name is acceptable). It is not acceptable to use names like *Free State* or *Manica Province*.

##### 4.4.7 Country

Use the modern name of the country in which the hunt took place.



#### **4.4.8 Measurements**

Registered measurers must complete this section and it must be completed in millimeters.

#### **4.4.9 Signature of hunter**

**This is very important!** The hunter signs that he/she hunted the animal legally and according to the codes and rules of SAHGCA.

#### **4.4.10 Correct documentation**

- i. The person that is responsible for assisting with the entries must ensure that the date on which the trophy animal was hunted, meets the requirements described in 3.1.2.1 and 3.1.2.2 for new trophies or 3.2.3. for old trophies and that Item E on form T.01d is completed correctly to distinguish between old and new trophies.
- ii. Trophies hunted on so called “open farms” farms must be accompanied by valid hunting licences.
- iii. Trophies hunted on exempted farms that are submitted for evaluation, must be accompanied by documentation that includes the exemption number of the farm. Signatures of both the landowner and the hunter must appear on the letter of permission.
- iv. Trophies hunted in other countries must be accompanied by the necessary export and import documentation. New trophies without adequate documentation will not be considered for recognition or be registered. Old trophies will be registered, as per 3.4.7.

#### **4.4.11 Signature of measurers**

Every entry form must be signed. All relevant licences, permits or permission letters must be attached to the entry form (T01.d) and must be kept by the branch management for five years.

#### **4.5 Capturing of data on the member administration system**

- i. Following the trophy registration process, the data from form T.01d must be captured on the member administration system. **Please see item 4.2.** Branches retain a copy of the form T.01d on file. The national office will make available the processed results.
- ii. All the T.01d's must be captured on the member administration system by 1 October every year, please take note that the system closes automatically and no data can be entered afterwards, this enables all the administrative and logistical processes to be completed in time to support the formal awards at the annual congress.

#### **4.6 Training of trophy measurers**

SAHGCA offers trophy measurement training at Inyathi Park, Pretoria and in other regions (depending on demand). Only candidates that achieve >90% for this course will qualify to become official SAHGCA trophy measurers.

All other candidates will receive a certificate of attendance.

The training of trophy measurer trainers in the regions has already started, with the goal to eventually decentralise the training and simplify ad-hoc training of measurers.

## 5. BRANCH CODES

The following branch codes must be used on all trophy entries for the SAHGCA Trophy Register.

Code	Branch	Town / City
008	Baviaanspoort	Pretoria-Noord
001	Bethal	Bethal
044	Bloemfontein	Bloemfontein
085	Bloukrans	Vanderkloof
033	Bosbok	Steelpoort
054	Bothaville	Bothaville
012	Brits	Brits
018	Centurion	Centurion
030	Cheetah	Hertzoaville
020	Diamant	Wolmaranstad
086	Doombera	Prieska
051	Duiker	Balfour
038	Edenvale	Edenvale
019	Eland	Alberton
041	Frontier	Stilfontein
083	Gamaqara	Kathu
088	Gamtoos	Patensie
062	Genl De La Rey	Lichtenburg
082	Gobabis	Gobabis
047	Griekwaland-Wes	Kimberley
060	Grvsbok	Jeffreysbaai
023	Hartbees	Potchefstroom
090	Hardekool	Mesina
006	Heidelberg	Heidelberg
084	Houtkapper	Secunda
059	Impala	Bredel
073	Iphithi	Durban
071	Kamdeboo	Graaf-Reinet
063	Kameeldoring	Mahikeng
048	Karoo	Victoria-Wes
026	Kaalagadi	Upington
074	Koedoe	Zeerust
043	Kosmos	Standerton
072	Koukamma	Kareedouw
050	Kwaqqa	Port Elizabeth
011	Lammeroeier	Aliwal-Noord
013	Loskop	Marble-Hall
057	Maiuba	Volksrust

066	Makwena	Setlaale
014	Marico-Bosveld	Rustenburg
089	Maskam	Vanrhynsdorp
032	Moani	Phalaborwa
076	Mounaini	Dundee
037	Nawenva	Nelspruit
002	Olifants	Middelburg
005	Oosrand	Kemptonpark
003	Oribi	Marqate
055	Overbera	Caledon
061	Platorand	Belfast
016	Pretoria-Oos	Pretoria-Oos
077	Renosterbera	Middelburg (Kaap)
021	Riemland	Bethlehem
087	Rietbok	Brevten
069	Sandrivier-58	Welkom
075	Sebra	Emalaheni
031	Soetdoring	Mokopane
039	Sprinbok	Brakpan
028	Steenbok	Lime Acres
042	Stormbera	Queenstown
079	Suikerbosrand	Meyerton
052	Swartland	Malmesbury
036	Tafelbera	Bellville
035	Tembo	Johannesburg-noord
017	Thabazimbi	Thabazimbi
010	Transvaal	Randfontein
070	Tuinroete	George
040	Umfoloji	Richardsbaai
004	Vaaldriehoek	Vereeniging
053	Vaalharts	Jan-Kemodoro
056	Valschrievier	Kroonstad
029	Vrvstaat Sandveld	Soutpan
049	Waterbera	Lephalale
068	Weskus	Vredenburg
007	Wesrand	Randburg
080	Wildevier	Frankfort
081	Windhoek	Windhoek
078	Witrenoster	Klerksdorp

## 6. SPECIES CODES Index to species names and –codes

		Code	Minimum	Record
BLESBUCK		3011	16 4/8	19 7/8
BONGO	Western	1011	(21 5/8)	30
BONTEBOK		3021	14	15 3/4
BUFFALO	Cape ( <i>Southern</i> )	9010	42	49 5/8
	Dwarf Forest	0020	(16)	24 1/8
	Central African	0010	(29 5/8)	35 1/8
BUSHBUCK	South African	1041	15	19 5/8
	Chobe	1021	(11 2/8)	17 3/8
	Harnessed	1031	(9 3/8)	12 2/8
BUSHPIG		1050	5 4/8	8
CARACAL		5080	(6 6/8)	
CHEETAH		0030	(9 7/8)	14 1/8
CROCODILE	Nile	0040	29	40 6/8
DEER	Barbary Red	0000	24	32
DIK-DIK	Salt's ( <i>Cordeaux's</i> )	4011	(1 6/8)	3 1/8
	Damaraland	4021	2 3/8	3 3/8
	Geunter's	4031	(2)	3
	Kirk's	4041	(2 3/8)	3 1/8
DUIKER	Blue	1061	1 6/8	2 1/8
	Red	1071	2 4/8	3 1/8
	Red Flanked	4051	(2)	3 1/8
	Southern Bush	4061	4 4/8	7
	Western Bush	4071	(2 6/8)	4 3/8
ELAND	Yellow Backed	1081	4 4/8	7 1/8
	Southern (Cape and Livingstone)	4091	35	45 5/8
	Central African Giant ( <i>Lord Derby</i> )	4081	(35 7/8)	50 4/8
ELEPHANT	Savannah Bull	7010	50	109
	Savannah Cow	8010	12	16
GAZELLE	Northern Grant's	3031	(18 3/8)	27 5/8
	Sudan Soemmerring's	3041	(12)	17 3/8
GEMSBUCK		3051	40	46 6/8
GERENUK	Southern	3061	(10 3/8)	15
GIANT FOREST HOG		1090	(6 2/8)	8
GRYSBOK	Cape	4101	3	4 2/8
	Sharpe's	4111	1 3/8	2 7/8
HARTEBEEST	Red ( <i>Cape</i> )	4121	23	26 4/8
	Lelwel	4131	23	24 2/8
	Lichtenstein's	4141	18 4/8	21 1/8
HIPPOPOTAMUS		0120	25	33 4/8
HYAENA	Brown	5060	Open	
	Spotted	5050	Open	
IMPALA	Black Faced ( <i>Angolan</i> )	4151	20 7/8	25 5/8
	Southern	4161	23 5/8	29 3/8
JACKAL	Black Backed	5070	Open	
KLIPSPRINGER		2011	4 1/8	6 2/8
KUDU	Southern Greater	4191	53 7/8	67 6/8

		Code	Minimum	Record
KOB	Lesser	4181	(21 5/8)	29 6/8
	Uganda	3101	(15 6/8)	19 2/8
	Western	3111	(15 6/8)	22 4/8
KORRIGUM ( <i>Senegal Hartebeest</i> )		3071	(18 3/8)	23 4/8
LECHWE	Red	0071	26	30 5/8
	Kafue	0061	29 7/8	33 4/8
	Black	0051	(17 4/8)	29 4/8
LEOPARD	African	6010	15 3/8	17 5/8
LION	African	5010	24	26 2/8
NYALA		1101	27	32 1/4
NYALA	Mountain	2021	(24 6/8)	33 6/8
ORIBI	Southern	3121	5	6 6/8
ORYX	Beisa	3131	(24 6/8)	35
	Fringe Eared	3151	(24 6/8)	30 1/8
	Scimitar Horned	3161	(30 3/8)	43 5/8
PUKU		3171	16 6/8	19 4/8
REEDBUCK	Common	4201	13	17
	Eastern Bohor	4211	(7 2/8)	9 5/8
	Nigerian Bohor	4221	(6 3/8)	9 6/8
	Southern Mountain	2031	6	9 2/8
RHEBOK	Vaal ( <i>Grey</i> )	2041	7 7/8	11 7/8
RHINOCEROS	Black	0090	(19 2/8)	25 4/8
	Southern White ( <i>Southern Square Mouthed</i> )	0100	(22 3/8)	28 3/8
ROAN	Southern	4231	27	31 7/8
ANTELOPE	Western	4241	(21 5/8)	31 2/8
SABLE ANTELOPE	Typical	4251	41 7/8	49 7/8
SHEEP	Barbary	2050	26	34
SITATUNGA	Zambezi	0111	(21 5/8)	30
SPRINGBUCK		3181	14	18 2/8
STEENBOK		4261	4 4/8	6 6/8
SUNI	Livingstone's	1111	3	4 1/8
TIANG ( <i>Tiang Hartebeest</i> )		3081	(16 3/8)	19 7/8
TSESSEBE		4271	15	17 5/8
WARTHOG		4280	13	21 1/8
WATERBUCK	Common	4291	28	36 4/8
	Rhodesian Defassa ( <i>Rhodesian &amp; Angolan</i> )	4301	(20)	30 3/8
	Sing Sing	4311	(21 5/8)	32 7/8
WILDEBEEST	Blue ( <i>Brindled Gnu</i> )	4321	28 4/8	34
	Nyasaland ( <i>Nyasaland Gnu</i> )	4331	(22 3/8)	28 7/8
	White Bearded ( <i>White Bearded Gnu</i> )	3191	(22 3/8)	27 5/8
	Black ( <i>White-tailed Gnu</i> )	3201	27 2/8	32 4/8

All minimums in brackets are revised as per rule 3.1.20

Names in brackets behind common name refers to combined distributional species, in *italics* refers to the alternate name and underlined refers to the old name.

## 7. METHODS

The following methods are the official measuring criteria of the Association for the measuring of trophies that are reflected in the SAHGCA Trophy Register.

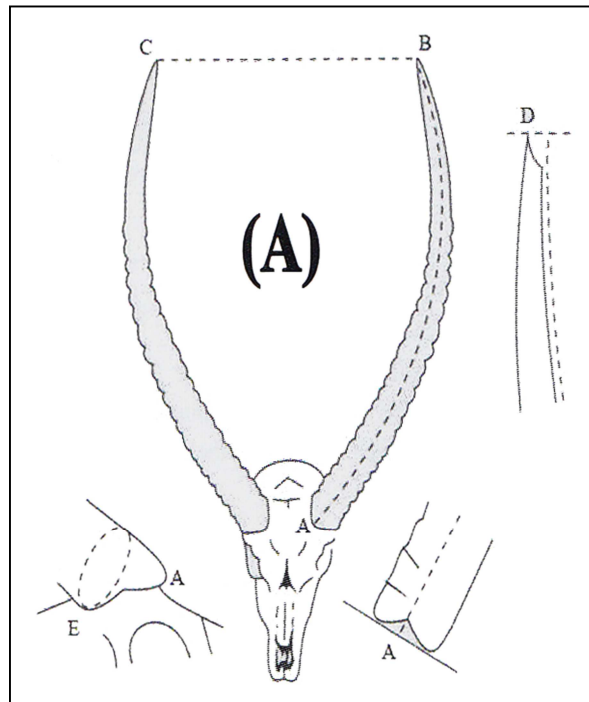
### 7.1. METHOD A (General Method of Measuring)

This measuring method is used for most African species with horns except for those where a special measuring method exists.

#### 7.1.1. Primary: Length of the horn

a. Measurement is taken along the front curve of the longest horn, starting at the lowest point on the forehead up to the tip of the horn (A - B).

b. Measurement is taken in a straight line along the top of the ridges of those horns with symmetrical ridges such as waterbuck, blesbuck, impala etc. The measuring tape is not pushed into the hollow curves in between the ridges.



c. If the tip of a horn is broken or when it is worn away, the measurement is taken to a point at right angles to the highest part of such a tip. (See illustration D).

#### 7.1.2. Secondary 1: Circumference at base

- Measurement is taken at right angles to the axis of the longest horn, as close as possible to the skull (See illustration E).
- Where the horn leaves the skull at an angle, one does not follow an elliptical line, in other words the curve at the bottom of the horn is not followed.

#### 7.1.3. Secondary 2: Tip-to-Tip

- Measurement is taken in a straight line between the tips of the two horns (C - B).
- Make a note if one horn has been broken in such a way that it will affect this measurement.

#### 7.1.4. Ranking

Ranking in the list is determined by the length of the longest horn only.

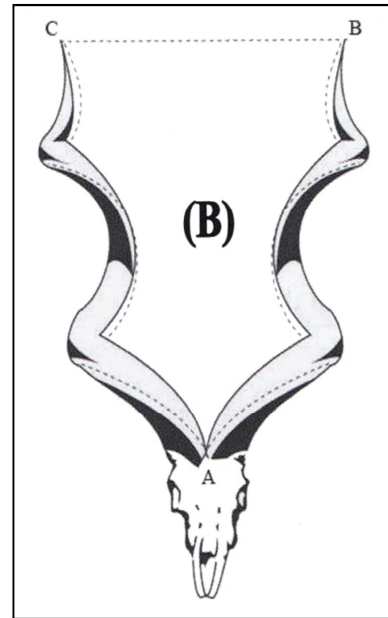
In case of a tie, it will be ranked in sequence of the year the trophy was obtained with the oldest one first - this will be applicable throughout.

## 7.2. METHOD B

This measuring method is used for all the spiral-horned animals.

### 7.2.1. Primary: Length of the horn

- Measurement is taken from the point that the ridge of the horn forms on the forehead. Follow the ridge all along its highest level up to the tip (A - B) or (A - C)
- Measurement is taken around the spiral.



### 7.2.2. Secondary 1: Circumference at base

- Measurement is taken at right angles to the axis of the longest horn, as close as possible to the skull (See illustration E of Method A).
- Where the horn leaves the skull at an angle, one does not follow an elliptical line, in other words the curve at the bottom of the horn is not followed.

### 7.2.3. Secondary 2: Tip-to-Tip

- Measurement is taken in a straight line between the tips of the two horns (C - B).
- Make a note if one horn has been broken in such a way that it will affect this measurement.

### 7.2.4. Ranking

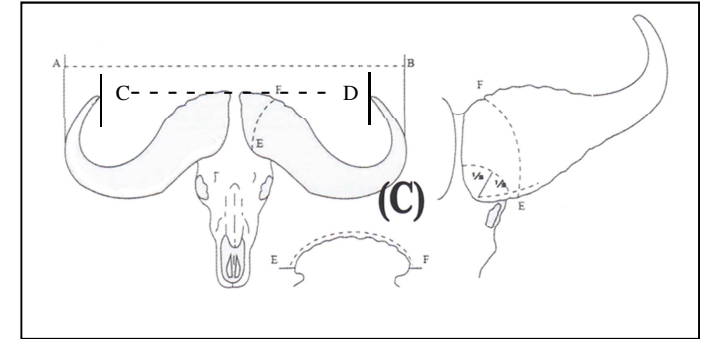
Ranking in the list is determined by the length of the longest horn only.

## 7.3. METHOD C

This measuring method is used for the Southern and Central African Buffalo, Brindled Gnu, White-bearded Gnu, Nyasaland Gnu and Cookson's Gnu. (Method A is used to measure the Dwarf Buffalo)

### 7.3.1. Primary: Width or span

Measurement is taken between the widest outer curves of the two horns by using two squares on a flat surface (A - B)



### 7.3.2. Secondary 1: Width of Boss

Measurement is taken of the wider boss at its widest point by starting at the furthest outer point at the edge of the boss and following across the curve of the boss up to the front edge (See illustration). Measurement is taken at a right angle to the axis of the horn at that point (E - F)

### 7.3.3. Secondary 2: Tip-to-Tip

Measurement is taken in a straight line from the tip of one horn to the tip of the other horn (C - D).

### 7.3.4. Ranking

Ranking is determined by the outside width or span.

#### 7.4. METHOD D

This measuring method is used for the Black Wildebeest or White-tailed Gnu.

##### 7.4.1. Primary: Length of horn

Measurement is taken by starting at a point on top of the head where the horn and skin meet and following a curve over the highest point of the boss and continuing all along the outside silhouette of the longer horn up to the tip (A - B - C)

##### 7.4.2. Secondary 1: Width of Boss

Measurement is taken from the lowest point at bottom of base over the boss up to the highest on top. (D - B)  
Measurement is not necessarily taken parallel with the axis of the skull or at right angles with the horn.

##### 7.4.3. Secondary 2: Tip-to-Tip

Measurement is taken in a straight line from the tip of one horn to the tip of the other horn.

##### 7.4.4. Ranking

Ranking in the list is determined by the length of the longest horn only.

#### 7.5. METHOD E

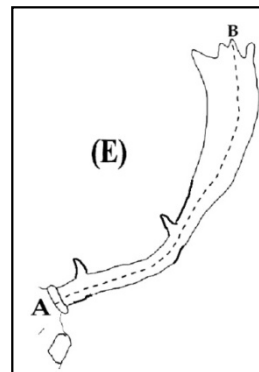
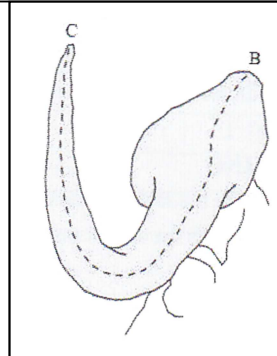
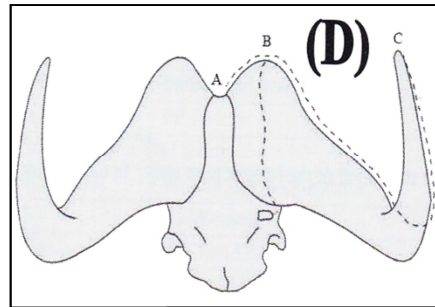
This measuring method is used for the Barbary Red Deer.

##### 7.5.1. Primary: Length

Measure the length of each antler on the outside curve from the lowest edge over the burr (coronet) to the tip (A-B).

##### 7.5.2. Ranking

Ranking in the list is determined by the length of the longest antler only.



#### 7.6. METHOD F

This measuring method is used for cat, jackal and hyena skulls.

##### 7.6.1. Primary: Sum of Length and Width of skull

##### 7.6.2. Secondary 1: Length of skull

Measurement is taken of the full length of the skull by using two squares on a level surface (A - B)

##### 7.6.3. Secondary 2: Width of skull

Measurement is taken of the widest part of the skull in the same way as for length (C - D).

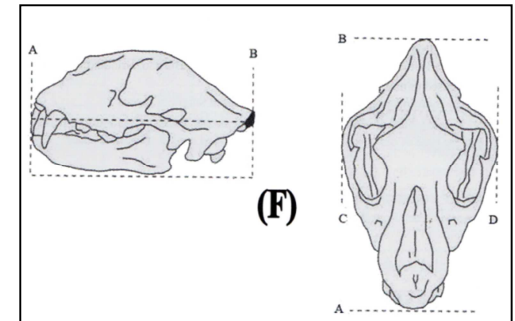
##### 7.6.4. Ranking

Ranking is determined by the sum total of both measurements.

#### 7.7. METHOD G

This measuring method is used for Elephant Tusks.

- Primary: Weight** of heaviest tusk.
- Secondary 1: Length** along the outside curve of heaviest tusk.
- Secondary 2: Circumference** of heaviest tusk where it protrudes from the gums.
- Ranking is determined by the weight of the heaviest tusk.

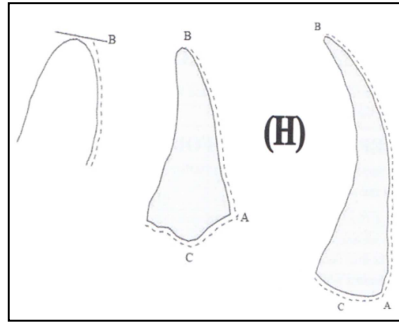


## 7.8. METHOD H

This measuring method is used for rhinoceros horns.

### 7.8.1. Primary: Length of the front horn

- Measurement is taken by starting at the base of the front of the horn where the skin and the horn meets all along the front curve of the horn up to the tip (A - B)
- Measurement at the tip must be taken at the highest point of the horn. (See illustration)



### 7.8.2. Secondary 1: Length of the rear horn

Same method as for the front horn but performed on the rear horn.

### 7.8.3. Secondary 2: Circumference of front horn

- Measurement is taken by following the lower edge of horn where skin joins onto the horn (C)
- This measurement is therefore not taken in the same way as the circumference measurement for Method A.

### 7.8.4. Ranking

Ranking is determined by the length of the front horn only.

## 7.9. METHOD I

This measuring method is used for crocodiles (handled like method F).

### 7.9.1. Primary: Sum of Length and Width of skull

### 7.9.2. Secondary 1: Length of skull

Measurement is taken of the total length of the skull with lower jaw in position (with or without the skin on the nose) by using two squares on a level surface.

### 7.9.3. Secondary 2: Width of skull

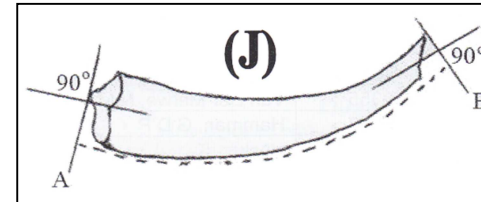
Measurement is taken of the widest part of the skull (with or without the skin) in the same way as for the length)

### 7.9.4. Ranking

Ranking is determined by the sum total of both measurements.

## 7.10. METHOD J

This measuring method is used for warthogs and giant forest hog.



### 7.10.1. Primary 1: Length of tusk

Measurement is

taken along the outside curve of the total length of longest upper tusk (A - B). Start measuring at a point at right angles to the highest point of the edge at the base of the tusk (see illustration). The same applies to worn down or broken tips when determining the end point of the measurement.

### 7.10.2. Secondary 1: Circumference of tusk

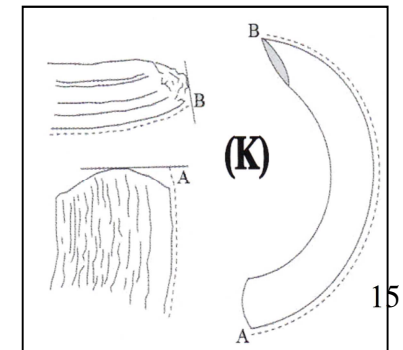
Measurement is taken of the circumference of the longest upper tusk at right angles to the axis and at the thickest position of the tusk..

### 7.10.3. Ranking

Ranking in the list is determined by the length of the longest or only upper tusk.

## 7.11. METHOD K

This measuring method is used for bushpig and hippopotamus. It is exactly the same as for Method J, except that the longest lower tusk is measured.



#### 7.11.1. **Primary: Length of tusk**

Measurement is taken along the outside curve of the longest lower tusk (A - B). Start measuring at a point at right angles to the highest point of the edge at the base of the tusk (see illustration). The same applies to worn down or broken tips when determining the end point of the measurement.

#### 7.11.2. **Secondary 1: Circumference of tusk**

Measurement is taken of the circumference of the longest lower tusk at right angles to the axis and at the thickest position of the tusk .

#### 7.11.3. **Ranking**

Ranking in the list is determined by the length of the longest lower tusk.

### 8. **SPECIES, SUB-SPECIES AND DISTRIBUTION AREAS**

With this system the latest edition of Rowland Ward's Records of Big Game is used as a basis for species, sub-species and their distribution with a few exceptions.

#### 8.1. **EXCEPTIONS ARE AS FOLLOWS**

##### 8.1.1. **Exotic Red Lechwe**

SAHGCA does not recognise the Exotic (Introduced) Red Lechwe introduced into certain parts of South Africa and Namibia due to hybridization that has occurred between the Red and Kafue Lechwe species.

##### 8.1.2. **Rhodesian Defassa Waterbuck** (Rhodesian and Angolan).

Only one sub-species is recognised here i.e. Rhodesian Defassa Waterbuck. The distribution area consists of the total area for both sub-species.

##### 8.1.3. **Southern Roan Antelope** (Southern and Angolan).

Only one sub-species is recognised namely Southern Roan Antelope. The distribution area consists of the total area for both sub-species.

##### 8.1.4. **Southern Eland** (Cape and Livingstone).

SAHGCA only accepts one subspecies, i.e. the southern Eland with the distribution area that includes the total distribution of the subspecies.

### 9. **SPECIES, SUBSPECIES WITH SPECIAL REQUIREMENTS**

#### 9.1 **Black Faced or Angolan Impala**

- a. The final decision for inclusion in the national list remains with the committee.
- b. Together with the entry the following must be submitted:
  - i. Clear colour photographs taken of the face of the animal from the front (portrait) as well as from the side (profile)
  - ii. Full details concerning the date hunted, exact location (name of farm, district and country) as well as the name and address of the owner on whose farm the trophy was taken.

#### 9.2 **Bontebok**

- a. The final decision for inclusion in the national list remains with the committee.
- b. Together with the entry the following must be submitted:
  - i. Clear colour photographs taken of the face of the animal from the front (portrait) as well as from the side (profile)
  - ii. Full details concerning the date hunted, exact location (name of farm, district and country) as well as the name and address of the owner on whose farm the trophy was taken.
  - iii. Documentary proof that the herd from which it was hunted, is registered as a herd that meets the national threshold, to be considered a Bontebok under the Threatened or Protected Species Regulations, better known as TOPS



**9. CONVERSION TABLE: Millimetres (mm) to Inches (e.g. 7<sup>5</sup>/<sub>8</sub>"**)

33	1 2/8	75	3	117	4 5/8	159	6 2/8	201	7 7/8	243	9 5/8	285	11 2/8	327	12 7/8
34	1 3/8	76	3	118	4 5/8	160	6 2/8	202	8	244	9 5/8	286	11 2/8	328	12 7/8
35	1 3/8	77	3	119	4 5/8	161	6 3/8	203	8	245	9 5/8	287	11 2/8	329	13
36	1 3/8	78	3 1/8	120	4 6/8	162	6 3/8	204	8	246	9 5/8	288	11 3/8	330	13
37	1 4/8	79	3 1/8	121	4 6/8	163	6 3/8	205	8 1/8	247	9 6/8	289	11 3/8	331	13
38	1 4/8	80	3 1/8	122	4 6/8	164	6 4/8	206	8 1/8	248	9 6/8	290	11 3/8	332	13 1/8
39	1 4/8	81	3 2/8	123	4 7/8	165	6 4/8	207	8 1/8	249	9 6/8	291	11 4/8	333	13 1/8
40	1 5/8	82	3 2/8	124	4 7/8	166	6 4/8	208	8 2/8	250	9 7/8	292	11 4/8	334	13 1/8
41	1 5/8	83	3 2/8	125	4 7/8	167	6 5/8	209	8 2/8	251	9 7/8	293	11 4/8	335	13 2/8
42	1 5/8	84	3 2/8	126	5	168	6 5/8	210	8 2/8	252	9 7/8	294	11 5/8	336	13 2/8
43	1 6/8	85	3 3/8	127	5	169	6 5/8	211	8 2/8	253	10	295	11 5/8	337	13 2/8
44	1 6/8	86	3 3/8	128	5	170	6 6/8	212	8 3/8	254	10	296	11 5/8	338	13 2/8
45	1 6/8	87	3 3/8	129	5 1/8	171	6 6/8	213	8 3/8	255	10	297	11 6/8	339	13 3/8
46	1 6/8	88	3 4/8	130	5 1/8	172	6 6/8	214	8 3/8	256	10 1/8	298	11 6/8	340	13 3/8
47	1 7/8	89	3 4/8	131	5 1/8	173	6 6/8	215	8 4/8	257	10 1/8	299	11 6/8	341	13 3/8
48	1 7/8	90	3 4/8	132	5 2/8	174	6 7/8	216	8 4/8	258	10 1/8	300	11 6/8	342	13 4/8
49	1 7/8	91	3 5/8	133	5 2/8	175	6 7/8	217	8 4/8	259	10 2/8	301	11 7/8	343	13 4/8
50	2	92	3 5/8	134	5 2/8	176	6 7/8	218	8 5/8	260	10 2/8	302	11 7/8	344	13 4/8
51	2	93	3 5/8	135	5 3/8	177	7	219	8 5/8	261	10 2/8	303	11 7/8	345	13 5/8
52	2	94	3 6/8	136	5 3/8	178	7	220	8 5/8	262	10 3/8	304	12	346	13 5/8
53	2 1/8	95	3 6/8	137	5 3/8	179	7	221	8 6/8	263	10 3/8	305	12	347	13 5/8
54	2 1/8	96	3 6/8	138	5 3/8	180	7 1/8	222	8 6/8	264	10 3/8	306	12	348	13 6/8
55	2 1/8	97	3 7/8	139	5 4/8	181	7 1/8	223	8 6/8	265	10 3/8	307	12 1/8	349	13 6/8
56	2 2/8	98	3 7/8	140	5 4/8	182	7 1/8	224	8 7/8	266	10 4/8	308	12 1/8	350	13 6/8
57	2 2/8	99	3 7/8	141	5 4/8	183	7 2/8	225	8 7/8	267	10 4/8	309	12 1/8	351	13 7/8
58	2 2/8	100	3 7/8	142	5 5/8	184	7 2/8	226	8 7/8	268	10 4/8	310	12 2/8	352	13 7/8
59	2 3/8	101	4	143	5 5/8	185	7 2/8	227	8 7/8	269	10 5/8	311	12 2/8	353	13 7/8
60	2 3/8	102	4	144	5 5/8	186	7 3/8	228	9	270	10 5/8	312	12 2/8	354	13 7/8
61	2 3/8	103	4	145	5 6/8	187	7 3/8	229	9	271	10 5/8	313	12 3/8	355	14
62	2 4/8	104	4 1/8	146	5 6/8	188	7 3/8	230	9	272	10 6/8	314	12 3/8	356	14
63	2 4/8	105	4 1/8	147	5 6/8	189	7 4/8	231	9 1/8	273	10 6/8	315	12 3/8	357	14
64	2 4/8	106	4 1/8	148	5 7/8	190	7 4/8	232	9 1/8	274	10 6/8	316	12 4/8	358	14 1/8
65	2 4/8	107	4 2/8	149	5 7/8	191	7 4/8	233	9 1/8	275	10 7/8	317	12 4/8	359	14 1/8
66	2 5/8	108	4 2/8	150	5 7/8	192	7 4/8	234	9 2/8	276	10 7/8	318	12 4/8	360	14 1/8
67	2 5/8	109	4 2/8	151	6	193	7 5/8	235	9 2/8	277	10 7/8	319	12 4/8	361	14 2/8
68	2 5/8	110	4 3/8	152	6	194	7 5/8	236	9 2/8	278	11	320	12 5/8	362	14 2/8
69	2 6/8	111	4 3/8	153	6	195	7 5/8	237	9 3/8	279	11	321	12 5/8	363	14 2/8
70	2 6/8	112	4 3/8	154	6 1/8	196	7 6/8	238	9 3/8	280	11	322	12 5/8	364	14 3/8
71	2 6/8	113	4 4/8	155	6 1/8	197	7 6/8	239	9 3/8	281	11 1/8	323	12 6/8	365	14 3/8
72	2 7/8	114	4 4/8	156	6 1/8	198	7 6/8	240	9 4/8	282	11 1/8	324	12 6/8	366	14 3/8
73	2 7/8	115	4 4/8	157	6 1/8	199	7 7/8	241	9 4/8	283	11 1/8	325	12 6/8	367	14 4/8
74	2 7/8	116	4 5/8	158	6 2/8	200	7 7/8	242	9 4/8	284	11 1/8	326	12 7/8	368	14 4/8

mm	inch
369	14 4/8
370	14 5/8
371	14 5/8
372	14 5/8
373	14 5/8
374	14 6/8
375	14 6/8
376	14 6/8
377	14 7/8
378	14 7/8
379	14 7/8
380	15
381	15
382	15
383	15 1/8
384	15 1/8
385	15 1/8
386	15 2/8
387	15 2/8
388	15 2/8
389	15 3/8
390	15 3/8
391	15 3/8
392	15 3/8
393	15 4/8
394	15 4/8
395	15 4/8
396	15 5/8
397	15 5/8
398	15 5/8
399	15 6/8
400	15 6/8
401	15 6/8
402	15 7/8
403	15 7/8
404	15 7/8
405	16
406	16
407	16
408	16 1/8
409	16 1/8
410	16 1/8

mm	inch
411	16 1/8
412	16 2/8
413	16 2/8
414	16 2/8
415	16 3/8
416	16 3/8
417	16 3/8
418	16 4/8
419	16 4/8
420	16 4/8
421	16 5/8
422	16 5/8
423	16 5/8
424	16 6/8
425	16 6/8
426	16 6/8
427	16 6/8
428	16 7/8
429	16 7/8
430	16 7/8
431	17
432	17
433	17
434	17 1/8
435	17 1/8
436	17 1/8
437	17 2/8
438	17 2/8
439	17 2/8
440	17 3/8
441	17 3/8
442	17 3/8
443	17 4/8
444	17 4/8
445	17 4/8
446	17 4/8
447	17 5/8
448	17 5/8
449	17 5/8
450	17 6/8
451	17 6/8
452	17 6/8

mm	inch
453	17 7/8
454	17 7/8
455	17 7/8
456	18
457	18
458	18
459	18 1/8
460	18 1/8
461	18 1/8
462	18 2/8
463	18 2/8
464	18 2/8
465	18 2/8
466	18 3/8
467	18 3/8
468	18 3/8
469	18 4/8
470	18 4/8
471	18 4/8
472	18 5/8
473	18 5/8
474	18 5/8
475	18 6/8
476	18 6/8
477	18 6/8
478	18 7/8
479	18 7/8
480	18 7/8
481	18 7/8
482	19
483	19
484	19
485	19 1/8
486	19 1/8
487	19 1/8
488	19 2/8
489	19 2/8
490	19 2/8
491	19 3/8
492	19 3/8
493	19 3/8
494	19 4/8

mm	inch
495	19 4/8
496	19 4/8
497	19 5/8
498	19 5/8
499	19 5/8
500	19 5/8
501	19 6/8
502	19 6/8
503	19 6/8
504	19 7/8
505	19 7/8
506	19 7/8
507	20
508	20
509	20
510	20 1/8
511	20 1/8
512	20 1/8
513	20 2/8
514	20 2/8
515	20 2/8
516	20 3/8
517	20 3/8
518	20 3/8
519	20 3/8
520	20 4/8
521	20 4/8
522	20 4/8
523	20 5/8
524	20 5/8
525	20 5/8
526	20 6/8
527	20 6/8
528	20 6/8
529	20 7/8
530	20 7/8
531	20 7/8
532	21
533	21
534	21
535	21 1/8
536	21 1/8

mm	inch
537	21 1/8
538	21 1/8
539	21 2/8
540	21 2/8
541	21 2/8
542	21 3/8
543	21 3/8
544	21 3/8
545	21 4/8
546	21 4/8
547	21 4/8
548	21 5/8
549	21 5/8
550	21 5/8
551	21 6/8
552	21 6/8
553	21 6/8
554	21 6/8
555	21 7/8
556	21 7/8
557	21 7/8
558	22
559	22
560	22
561	22 1/8
562	22 1/8
563	22 1/8
564	22 2/8
565	22 2/8
566	22 2/8
567	22 3/8
568	22 3/8
569	22 3/8
570	22 4/8
571	22 4/8
572	22 4/8
573	22 4/8
574	22 5/8
575	22 5/8
576	22 5/8
577	22 6/8
578	22 6/8

mm	inch
579	22 6/8
580	22 7/8
581	22 7/8
582	22 7/8
583	23
584	23
585	23
586	23 1/8
587	23 1/8
588	23 1/8
589	23 2/8
590	23 2/8
591	23 2/8
592	23 2/8
593	23 3/8
594	23 3/8
595	23 3/8
596	23 4/8
597	23 4/8
598	23 4/8
599	23 5/8
600	23 5/8
601	23 5/8
602	23 6/8
603	23 6/8
604	23 6/8
605	23 7/8
606	23 7/8
607	23 7/8
608	23 7/8
609	24
610	24
611	24
612	24 1/8
613	24 1/8
614	24 1/8
615	24 2/8
616	24 2/8
617	24 2/8
618	24 3/8
619	24 3/8
620	24 3/8

mm	inch
621	24 4/8
622	24 4/8
623	24 4/8
624	24 5/8
625	24 5/8
626	24 5/8
627	24 5/8
628	24 6/8
629	24 6/8
630	24 6/8
631	24 7/8
632	24 7/8
633	24 7/8
634	25
635	25
636	25
637	25 1/8
638	25 1/8
639	25 1/8
640	25 2/8
641	25 2/8
642	25 2/8
643	25 3/8
644	25 3/8
645	25 3/8
646	25 3/8
647	25 4/8
648	25 4/8
649	25 4/8
650	25 5/8
651	25 5/8
652	25 5/8
653	25 6/8
654	25 6/8
655	25 6/8
656	25 7/8
657	25 7/8
658	25 7/8
659	26
660	26
661	26
662	26 1/8

mm	inch
663	26 1/8
664	26 1/8
665	26 1/8
666	26 2/8
667	26 2/8
668	26 2/8
669	26 3/8
670	26 3/8
671	26 3/8
672	26 4/8
673	26 4/8
674	26 4/8
675	26 5/8
676	26 5/8
677	26 5/8
678	26 6/8
679	26 6/8
680	26 6/8
681	26 6/8
682	26 7/8
683	26 7/8
684	26 7/8
685	27
686	27
687	27
688	27 1/8
689	27 1/8
690	27 1/8
691	27 2/8
692	27 2/8
693	27 2/8
694	27 3/8
695	27 3/8
696	27 3/8
697	27 4/8
698	27 4/8
699	27 4/8
700	27 4/8
701	27 5/8
702	27 5/8
703	27 5/8
704	27 6/8

mm	inch
705	27 6/8
706	27 6/8
707	27 7/8
708	27 7/8
709	27 7/8
710	28
711	28
712	28
713	28 1/8
714	28 1/8
715	28 1/8
716	28 2/8
717	28 2/8
718	28 2/8
719	28 2/8
720	28 3/8
721	28 3/8
722	28 3/8
723	28 4/8
724	28 4/8
725	28 4/8
726	28 5/8
727	28 5/8
728	28 5/8
729	28 6/8
730	28 6/8
731	28 6/8
732	28 7/8
733	28 7/8
734	28 7/8
735	28 7/8
736	29
737	29
738	29
739	29 1/8
740	29 1/8
741	29 1/8
742	29 2/8
743	29 2/8
744	29 2/8
745	29 3/8
746	29 3/8

mm	inch
747	29 3/8
748	29 4/8
749	29 4/8
750	29 4/8
751	29 5/8
752	29 5/8
753	29 5/8
754	29 5/8
755	29 6/8
756	29 6/8
757	29 6/8
758	29 7/8
759	29 7/8
760	29 7/8
761	30
762	30
763	30
764	30 1/8
765	30 1/8
766	30 1/8
767	30 2/8
768	30 2/8
769	30 2/8
770	30 3/8
771	30 3/8
772	30 3/8
773	30 3/8
774	30 4/8
775	30 4/8
776	30 4/8
777	30 5/8
778	30 5/8
779	30 5/8
780	30 6/8
781	30 6/8
782	30 6/8
783	30 7/8
784	30 7/8
785	30 7/8
786	31
787	31
788	31

mm	inch
789	31 1/8
790	31 1/8
791	31 1/8
792	31 1/8
793	31 2/8
794	31 2/8
795	31 2/8
796	31 3/8
797	31 3/8
798	31 3/8
799	31 4/8
800	31 4/8
801	31 4/8
802	31 5/8
803	31 5/8
804	31 5/8
805	31 6/8
806	31 6/8
807	31 6/8
808	31 6/8
809	31 7/8
810	31 7/8
811	31 7/8
812	32
813	32
814	32
815	32 1/8
816	32 1/8
817	32 1/8
818	32 2/8
819	32 2/8
820	32 2/8
821	32 3/8
822	32 3/8
823	32 3/8
824	32 4/8
825	32 4/8
826	32 4/8
827	32 4/8
828	32 5/8
829	32 5/8
830	32 5/8

mm	inch
831	32 6/8
832	32 6/8
833	32 6/8
834	32 7/8
835	32 7/8
836	32 7/8
837	33
838	33
839	33
840	33 1/8
841	33 1/8
842	33 1/8
843	33 2/8
844	33 2/8
845	33 2/8
846	33 2/8
847	33 3/8
848	33 3/8
849	33 3/8
850	33 4/8
851	33 4/8
852	33 4/8
853	33 5/8
854	33 5/8
855	33 5/8
856	33 6/8
857	33 6/8
858	33 6/8
859	33 7/8
860	33 7/8
861	33 7/8
862	33 7/8
863	34
864	34
865	34
866	34 1/8
867	34 1/8
868	34 1/8
869	34 2/8
870	34 2/8
871	34 2/8
872	34 3/8

mm	inch
873	34 3/8
874	34 3/8
875	34 4/8
876	34 4/8
877	34 4/8
878	34 5/8
879	34 5/8
880	34 5/8
881	34 5/8
882	34 6/8
883	34 6/8
884	34 6/8
885	34 7/8
886	34 7/8
887	34 7/8
888	35
889	35
890	35
891	35 1/8
892	35 1/8
893	35 1/8
894	35 2/8
895	35 2/8
896	35 2/8
897	35 3/8
898	35 3/8
899	35 3/8
900	35 3/8
901	35 4/8
902	35 4/8
903	35 4/8
904	35 5/8
905	35 5/8
906	35 5/8
907	35 6/8
908	35 6/8
909	35 6/8
910	35 7/8
911	35 7/8
912	35 7/8
913	36
914	36

mm	inch
915	36
916	36 1/8
917	36 1/8
918	36 1/8
919	36 1/8
920	36 2/8
921	36 2/8
922	36 2/8
923	36 3/8
924	36 3/8
925	36 3/8
926	36 4/8
927	36 4/8
928	36 4/8
929	36 5/8
930	36 5/8
931	36 5/8
932	36 6/8
933	36 6/8
934	36 6/8
935	36 6/8
936	36 7/8
937	36 7/8
938	36 7/8
939	37
940	37
941	37
942	37 1/8
943	37 1/8
944	37 1/8
945	37 2/8
946	37 2/8
947	37 2/8
948	37 3/8
949	37 3/8
950	37 3/8
951	37 4/8
952	37 4/8
953	37 4/8
954	37 4/8
955	37 5/8
956	37 5/8

mm	inch
957	37 5/8
958	37 6/8
959	37 6/8
960	37 6/8
961	37 7/8
962	37 7/8
963	37 7/8
964	38
965	38
966	38
967	38 1/8
968	38 1/8
969	38 1/8
970	38 2/8
971	38 2/8
972	38 2/8
973	38 2/8
974	38 3/8
975	38 3/8
976	38 3/8
977	38 4/8
978	38 4/8
979	38 4/8
980	38 5/8
981	38 5/8
982	38 5/8
983	38 6/8
984	38 6/8
985	38 6/8
986	38 7/8
987	38 7/8
988	38 7/8
989	38 7/8
990	39
991	39
992	39
993	39 1/8
994	39 1/8
995	39 1/8
996	39 2/8
997	39 2/8
998	39 2/8

mm	inch
999	39 3/8
1000	39 3/8
1001	39 3/8
1002	39 4/8
1003	39 4/8
1004	39 4/8
1005	39 5/8
1006	39 5/8
1007	39 5/8
1008	39 5/8
1009	39 6/8
1010	39 6/8
1011	39 6/8
1012	39 7/8
1013	39 7/8
1014	39 7/8
1015	40
1016	40
1017	40
1018	40 1/8
1019	40 1/8
1020	40 1/8
1021	40 2/8
1022	40 2/8
1023	40 2/8
1024	40 3/8
1025	40 3/8
1026	40 3/8
1027	40 3/8
1028	40 4/8
1029	40 4/8
1030	40 4/8
1031	40 5/8
1032	40 5/8
1033	40 5/8
1034	40 6/8
1035	40 6/8
1036	40 6/8
1037	40 7/8
1038	40 7/8
1039	40 7/8
1040	41

mm	inch
1041	41
1042	41
1043	41 1/8
1044	41 1/8
1045	41 1/8
1046	41 1/8
1047	41 2/8
1048	41 2/8
1049	41 2/8
1050	41 3/8
1051	41 3/8
1052	41 3/8
1053	41 4/8
1054	41 4/8
1055	41 4/8
1056	41 5/8
1057	41 5/8
1058	41 5/8
1059	41 6/8
1060	41 6/8
1061	41 6/8
1062	41 6/8
1063	41 7/8
1064	41 7/8
1065	41 7/8
1066	42
1067	42
1068	42
1069	42 1/8
1070	42 1/8
1071	42 1/8
1072	42 2/8
1073	42 2/8
1074	42 2/8
1075	42 3/8
1076	42 3/8
1077	42 3/8
1078	42 4/8
1079	42 4/8
1080	42 4/8
1081	42 4/8
1082	42 5/8

mm	inch
1083	42 5/8
1084	42 5/8
1085	42 6/8
1086	42 6/8
1087	42 6/8
1088	42 7/8
1089	42 7/8
1090	42 7/8
1091	43
1092	43
1093	43
1094	43 1/8
1095	43 1/8
1096	43 1/8
1097	43 2/8
1098	43 2/8
1099	43 2/8
1100	43 2/8
1101	43 3/8
1102	43 3/8
1103	43 3/8
1104	43 4/8
1105	43 4/8
1106	43 4/8
1107	43 5/8
1108	43 5/8
1109	43 5/8
1110	43 6/8
1111	43 6/8
1112	43 6/8
1113	43 7/8
1114	43 7/8
1115	43 7/8
1116	43 7/8
1117	44
1118	44
1119	44
1120	44 1/8
1121	44 1/8
1122	44 1/8
1123	44 2/8
1124	44 2/8

mm	inch
1125	44 2/8
1126	44 3/8
1127	44 3/8
1128	44 3/8
1129	44 4/8
1130	44 4/8
1131	44 4/8
1132	44 5/8
1133	44 5/8
1134	44 5/8
1135	44 5/8
1136	44 6/8
1137	44 6/8
1138	44 6/8
1139	44 7/8
1140	44 7/8
1141	44 7/8
1142	45
1143	45
1144	45
1145	45 1/8
1146	45 1/8
1147	45 1/8
1148	45 2/8
1149	45 2/8
1150	45 2/8
1151	45 3/8
1152	45 3/8
1153	45 3/8
1154	45 3/8
1155	45 4/8
1156	45 4/8
1157	45 4/8
1158	45 5/8
1159	45 5/8
1160	45 5/8
1161	45 6/8
1162	45 6/8
1163	45 6/8
1164	45 7/8
1165	45 7/8
1166	45 7/8

mm	inch
1167	46
1168	46
1169	46
1170	46 1/8
1171	46 1/8
1172	46 1/8
1173	46 1/8
1174	46 2/8
1175	46 2/8
1176	46 2/8
1177	46 3/8
1178	46 3/8
1179	46 3/8
1180	46 4/8
1181	46 4/8
1182	46 4/8
1183	46 5/8
1184	46 5/8
1185	46 5/8
1186	46 6/8
1187	46 6/8
1188	46 6/8
1189	46 6/8
1190	46 7/8
1191	46 7/8
1192	46 7/8
1193	47
1194	47
1195	47
1196	47 1/8
1197	47 1/8
1198	47 1/8
1199	47 2/8
1200	47 2/8
1201	47 2/8
1202	47 3/8
1203	47 3/8
1204	47 3/8
1205	47 4/8
1206	47 4/8
1207	47 4/8
1208	47 4/8

mm	inch
1209	47 5/8
1210	47 5/8
1211	47 5/8
1212	47 6/8
1213	47 6/8
1214	47 6/8
1215	47 7/8
1216	47 7/8
1217	47 7/8
1218	48
1219	48
1220	48
1221	48 1/8
1222	48 1/8
1223	48 1/8
1224	48 2/8
1225	48 2/8
1226	48 2/8
1227	48 2/8
1228	48 3/8
1229	48 3/8
1230	48 3/8
1231	48 4/8
1232	48 4/8
1233	48 4/8
1234	48 5/8
1235	48 5/8
1236	48 5/8
1237	48 6/8
1238	48 6/8
1239	48 6/8
1240	48 7/8
1241	48 7/8
1242	48 7/8
1243	48 7/8
1244	49
1245	49
1246	49
1247	49 1/8
1248	49 1/8
1249	49 1/8
1250	49 2/8

mm	inch
1251	49 2/8
1252	49 2/8
1253	49 3/8
1254	49 3/8
1255	49 3/8
1256	49 4/8
1257	49 4/8
1258	49 4/8
1259	49 5/8
1260	49 5/8
1261	49 5/8
1262	49 5/8
1263	49 6/8
1264	49 6/8
1265	49 6/8
1266	49 7/8
1267	49 7/8
1268	49 7/8
1269	50
1270	50
1271	50
1272	50 1/8
1273	50 1/8
1274	50 1/8
1275	50 2/8
1276	50 2/8
1277	50 2/8
1278	50 3/8
1279	50 3/8
1280	50 3/8
1281	50 3/8
1282	50 4/8
1283	50 4/8
1284	50 4/8
1285	50 5/8
1286	50 5/8
1287	50 5/8
1288	50 6/8
1289	50 6/8
1290	50 6/8
1291	50 7/8
1292	50 7/8

mm	inch
1293	50 7/8
1294	51
1295	51
1296	51
1297	51 1/8
1298	51 1/8
1299	51 1/8
1300	51 1/8
1301	51 2/8
1302	51 2/8
1303	51 2/8
1304	51 3/8
1305	51 3/8
1306	51 3/8
1307	51 4/8
1308	51 4/8
1309	51 4/8
1310	51 5/8
1311	51 5/8
1312	51 5/8
1313	51 6/8
1314	51 6/8
1315	51 6/8
1316	51 6/8
1317	51 7/8
1318	51 7/8
1319	51 7/8
1320	52
1321	52
1322	52
1323	52 1/8
1324	52 1/8
1325	52 1/8
1326	52 2/8
1327	52 2/8
1328	52 2/8
1329	52 3/8
1330	52 3/8
1331	52 3/8
1332	52 4/8
1333	52 4/8
1334	52 4/8

mm	inch
1335	52 4/8
1336	52 5/8
1337	52 5/8
1338	52 5/8
1339	52 6/8
1340	52 6/8
1341	52 6/8
1342	52 7/8
1343	52 7/8
1344	52 7/8
1345	53
1346	53
1347	53
1348	53 1/8
1349	53 1/8
1350	53 1/8
1351	53 2/8
1352	53 2/8
1353	53 2/8
1354	53 2/8
1355	53 3/8
1356	53 3/8
1357	53 3/8
1358	53 4/8
1359	53 4/8
1360	53 4/8
1361	53 5/8
1362	53 5/8
1363	53 5/8
1364	53 6/8
1365	53 6/8
1366	53 6/8
1367	53 7/8
1368	53 7/8
1369	53 7/8
1370	53 7/8
1371	54
1372	54
1373	54
1374	54 1/8
1375	54 1/8
1376	54 1/8

mm	inch
1377	54 2/8
1378	54 2/8
1379	54 2/8
1380	54 3/8
1381	54 3/8
1382	54 3/8
1383	54 4/8
1384	54 4/8
1385	54 4/8
1386	54 5/8
1387	54 5/8
1388	54 5/8
1389	54 5/8
1390	54 6/8
1391	54 6/8
1392	54 6/8
1393	54 7/8
1394	54 7/8
1395	54 7/8
1396	55
1397	55
1398	55
1399	55 1/8
1400	55 1/8
1401	55 1/8
1402	55 2/8
1403	55 2/8
1404	55 2/8
1405	55 3/8
1406	55 3/8
1407	55 3/8
1408	55 3/8
1409	55 4/8
1410	55 4/8
1411	55 4/8
1412	55 5/8
1413	55 5/8
1414	55 5/8
1415	55 6/8
1416	55 6/8
1417	55 6/8
1418	55 7/8

mm	inch
1419	55 7/8
1420	55 7/8
1421	56
1422	56
1423	56
1424	56 1/8
1425	56 1/8
1426	56 1/8
1427	56 1/8
1428	56 2/8
1429	56 2/8
1430	56 2/8
1431	56 3/8
1432	56 3/8
1433	56 3/8
1434	56 4/8
1435	56 4/8
1436	56 4/8
1437	56 5/8
1438	56 5/8
1439	56 5/8
1440	56 6/8
1441	56 6/8
1442	56 6/8
1443	56 6/8
1444	56 7/8
1445	56 7/8
1446	56 7/8
1447	57
1448	57
1449	57
1450	57 1/8
1451	57 1/8
1452	57 1/8
1453	57 2/8
1454	57 2/8
1455	57 2/8
1456	57 3/8
1457	57 3/8
1458	57 3/8
1459	57 4/8
1460	57 4/8

mm	inch
1461	57 4/8
1462	57 4/8
1463	57 5/8
1464	57 5/8
1465	57 5/8
1466	57 6/8
1467	57 6/8
1468	57 6/8
1469	57 7/8
1470	57 7/8
1471	57 7/8
1472	58
1473	58
1474	58
1475	58 1/8
1476	58 1/8
1477	58 1/8
1478	58 2/8
1479	58 2/8
1480	58 2/8
1481	58 2/8
1482	58 3/8
1483	58 3/8
1484	58 3/8
1485	58 4/8
1486	58 4/8
1487	58 4/8
1488	58 5/8
1489	58 5/8
1490	58 5/8
1491	58 6/8
1492	58 6/8
1493	58 6/8
1494	58 7/8
1495	58 7/8
1496	58 7/8
1497	58 7/8
1498	59
1499	59
1500	59
1501	59 1/8
1502	59 1/8

mm	inch
1503	59 1/8
1504	59 2/8
1505	59 2/8
1506	59 2/8
1507	59 3/8
1508	59 3/8
1509	59 3/8
1510	59 4/8
1511	59 4/8
1512	59 4/8
1513	59 5/8
1514	59 5/8
1515	59 5/8
1516	59 5/8
1517	59 6/8
1518	59 6/8
1519	59 6/8
1520	59 7/8
1521	59 7/8
1522	59 7/8
1523	60
1524	60
1525	60
1526	60 1/8
1527	60 1/8
1528	60 1/8
1529	60 2/8
1530	60 2/8
1531	60 2/8
1532	60 3/8
1533	60 3/8
1534	60 3/8
1535	60 3/8
1536	60 4/8
1537	60 4/8
1538	60 4/8
1539	60 5/8
1540	60 5/8
1541	60 5/8
1542	60 6/8
1543	60 6/8
1544	60 6/8

mm	inch
1545	60 7/8
1546	60 7/8
1547	60 7/8
1548	61
1549	61
1550	61
1551	61 1/8
1552	61 1/8
1553	61 1/8
1554	61 1/8
1555	61 2/8
1556	61 2/8
1557	61 2/8
1558	61 3/8
1559	61 3/8
1560	61 3/8
1561	61 4/8
1562	61 4/8
1563	61 4/8
1564	61 5/8
1565	61 5/8
1566	61 5/8
1567	61 6/8
1568	61 6/8
1569	61 6/8
1570	61 6/8
1571	61 7/8
1572	61 7/8
1573	61 7/8
1574	62
1575	62
1576	62
1577	62 1/8
1578	62 1/8
1579	62 1/8
1580	62 2/8
1581	62 2/8
1582	62 2/8
1583	62 3/8
1584	62 3/8
1585	62 3/8
1586	62 4/8

mm	inch
1587	62 4/8
1588	62 4/8
1589	62 4/8
1590	62 5/8
1591	62 5/8
1592	62 5/8
1593	62 6/8
1594	62 6/8
1595	62 6/8
1596	62 7/8
1597	62 7/8
1598	62 7/8
1599	63
1600	63
1601	63
1602	63 1/8
1603	63 1/8
1604	63 1/8
1605	63 2/8
1606	63 2/8
1607	63 2/8
1608	63 2/8
1609	63 3/8
1610	63 3/8
1611	63 3/8
1612	63 4/8
1613	63 4/8
1614	63 4/8
1615	63 5/8
1616	63 5/8
1617	63 5/8
1618	63 6/8
1619	63 6/8
1620	63 6/8
1621	63 7/8
1622	63 7/8
1623	63 7/8
1624	63 7/8
1625	64
1626	64
1627	64
1628	64 1/8

mm	inch
1629	64 1/8
1630	64 1/8
1631	64 2/8
1632	64 2/8
1633	64 2/8
1634	64 3/8
1635	64 3/8
1636	64 3/8
1637	64 4/8
1638	64 4/8
1639	64 4/8
1640	64 5/8
1641	64 5/8
1642	64 5/8
1643	64 5/8
1644	64 6/8
1645	64 6/8
1646	64 6/8
1647	64 7/8
1648	64 7/8
1649	64 7/8
1650	65
1651	65
1652	65
1653	65 1/8
1654	65 1/8
1655	65 1/8
1656	65 2/8
1657	65 2/8
1658	65 2/8
1659	65 3/8
1660	65 3/8
1661	65 3/8
1662	65 3/8
1663	65 4/8
1664	65 4/8
1665	65 4/8
1666	65 5/8
1667	65 5/8
1668	65 5/8
1669	65 6/8
1670	65 6/8

mm	inch
1671	65 6/8
1672	65 7/8
1673	65 7/8
1674	65 7/8
1675	66
1676	66
1677	66
1678	66 1/8
1679	66 1/8
1680	66 1/8
1681	66 1/8
1682	66 2/8
1683	66 2/8
1684	66 2/8
1685	66 3/8
1686	66 3/8
1687	66 3/8
1688	66 4/8
1689	66 4/8
1690	66 4/8
1691	66 5/8
1692	66 5/8
1693	66 5/8
1694	66 6/8
1695	66 6/8
1696	66 6/8
1697	66 6/8
1698	66 7/8
1699	66 7/8
1700	66 7/8
1701	67
1702	67
1703	67
1704	67 1/8
1705	67 1/8
1706	67 1/8
1707	67 2/8
1708	67 2/8
1709	67 2/8
1710	67 3/8
1711	67 3/8
1712	67 3/8

mm	inch
1713	67 4/8
1714	67 4/8
1715	67 4/8
1716	67 4/8
1717	67 5/8
1718	67 5/8
1719	67 5/8
1720	67 6/8
1721	67 6/8
1722	67 6/8
1723	67 7/8
1724	67 7/8
1725	67 7/8
1726	68
1727	68
1728	68
1729	68 1/8
1730	68 1/8
1731	68 1/8
1732	68 2/8
1733	68 2/8
1734	68 2/8
1735	68 2/8
1736	68 3/8
1737	68 3/8
1738	68 3/8
1739	68 4/8
1740	68 4/8
1741	68 4/8
1742	68 5/8
1743	68 5/8
1744	68 5/8
1745	68 6/8
1746	68 6/8
1747	68 6/8
1748	68 7/8
1749	68 7/8
1750	68 7/8
1751	68 7/8
1752	69
1753	69
1754	69

mm	inch
1755	69 1/8
1756	69 1/8
1757	69 1/8
1758	69 2/8
1759	69 2/8
1760	69 2/8
1761	69 3/8
1762	69 3/8
1763	69 3/8
1764	69 4/8
1765	69 4/8
1766	69 4/8
1767	69 5/8
1768	69 5/8
1769	69 5/8
1770	69 5/8
1771	69 6/8
1772	69 6/8
1773	69 6/8
1774	69 7/8
1775	69 7/8
1776	69 7/8
1777	70
1778	70
1779	70
1780	70 1/8
1781	70 1/8
1782	70 1/8
1783	70 2/8
1784	70 2/8
1785	70 2/8
1786	70 3/8
1787	70 3/8
1788	70 3/8
1789	70 3/8
1790	70 4/8
1791	70 4/8
1792	70 4/8
1793	70 5/8
1794	70 5/8
1795	70 5/8
1796	70 6/8

mm	inch
1797	70 6/8
1798	70 6/8
1799	70 7/8
1800	70 7/8
1801	70 7/8
1802	71
1803	71
1804	71
1805	71 1/8
1806	71 1/8
1807	71 1/8
1808	71 1/8
1809	71 2/8
1810	71 2/8
1811	71 2/8
1812	71 3/8
1813	71 3/8
1814	71 3/8
1815	71 4/8
1816	71 4/8
1817	71 4/8
1818	71 5/8
1819	71 5/8
1820	71 5/8
1821	71 6/8
1822	71 6/8
1823	71 6/8
1824	71 6/8
1825	71 7/8
1826	71 7/8
1827	71 7/8
1828	72
1829	72
1830	72
1831	72 1/8
1832	72 1/8
1833	72 1/8
1834	72 2/8
1835	72 2/8
1836	72 2/8
1837	72 3/8
1838	72 3/8

mm	inch
1839	72 3/8
1840	72 4/8
1841	72 4/8
1842	72 4/8
1843	72 4/8
1844	72 5/8
1845	72 5/8
1846	72 5/8
1847	72 6/8
1848	72 6/8
1849	72 6/8
1850	72 7/8
1851	72 7/8
1852	72 7/8
1853	73
1854	73
1855	73
1856	73 1/8
1857	73 1/8
1858	73 1/8
1859	73 2/8
1860	73 2/8
1861	73 2/8
1862	73 2/8
1863	73 3/8
1864	73 3/8
1865	73 3/8
1866	73 4/8
1867	73 4/8
1868	73 4/8
1869	73 5/8
1870	73 5/8
1871	73 5/8
1872	73 6/8
1873	73 6/8
1874	73 6/8
1875	73 7/8
1876	73 7/8
1877	73 7/8
1878	73 7/8
1879	74
1880	74

mm	inch
1881	74
1882	74 1/8
1883	74 1/8
1884	74 1/8
1885	74 2/8
1886	74 2/8
1887	74 2/8
1888	74 3/8
1889	74 3/8
1890	74 3/8
1891	74 4/8
1892	74 4/8
1893	74 4/8
1894	74 5/8
1895	74 5/8
1896	74 5/8
1897	74 5/8
1898	74 6/8
1899	74 6/8
1900	74 6/8
1901	74 7/8
1902	74 7/8
1903	74 7/8
1904	75
1905	75
1906	75
1907	75 1/8
1908	75 1/8
1909	75 1/8
1910	75 2/8
1911	75 2/8
1912	75 2/8
1913	75 3/8
1914	75 3/8
1915	75 3/8
1916	75 3/8
1917	75 4/8
1918	75 4/8
1919	75 4/8
1920	75 5/8
1921	75 5/8
1922	75 5/8

mm	inch
1923	75 6/8
1924	75 6/8
1925	75 6/8
1926	75 7/8
1927	75 7/8
1928	75 7/8
1929	76
1930	76
1931	76
1932	76 1/8
1933	76 1/8
1934	76 1/8
1935	76 1/8
1936	76 2/8
1937	76 2/8
1938	76 2/8
1939	76 3/8
1940	76 3/8
1941	76 3/8
1942	76 4/8
1943	76 4/8
1944	76 4/8
1945	76 5/8
1946	76 5/8
1947	76 5/8
1948	76 6/8
1949	76 6/8
1950	76 6/8
1951	76 6/8
1952	76 7/8
1953	76 7/8
1954	76 7/8
1955	77
1956	77
1957	77
1958	77 1/8
1959	77 1/8
1960	77 1/8
1961	77 2/8
1962	77 2/8
1963	77 2/8
1964	77 3/8

mm	inch
1965	77 3/8
1966	77 3/8
1967	77 4/8
1968	77 4/8
1969	77 4/8
1970	77 4/8
1971	77 5/8
1972	77 5/8
1973	77 5/8
1974	77 6/8
1975	77 6/8
1976	77 6/8
1977	77 7/8
1978	77 7/8
1979	77 7/8
1980	78
1981	78
1982	78
1983	78 1/8
1984	78 1/8
1985	78 1/8
1986	78 2/8
1987	78 2/8
1988	78 2/8
1989	78 2/8
1990	78 3/8
1991	78 3/8
1992	78 3/8
1993	78 4/8
1994	78 4/8
1995	78 4/8
1996	78 5/8
1997	78 5/8
1998	78 5/8
1999	78 6/8
2000	78 6/8
2001	78 6/8
2002	78 7/8
2003	78 7/8
2004	78 7/8
2005	78 7/8
2006	79

mm	inch
2007	79
2008	79
2009	79 1/8
2010	79 1/8
2011	79 1/8
2012	79 2/8
2013	79 2/8
2014	79 2/8
2015	79 3/8
2016	79 3/8
2017	79 3/8
2018	79 4/8
2019	79 4/8
2020	79 4/8